



**MIND**  
FULL SOLUTIONS

PROFILE  
2024



# ABOUT US

**MIND** – The leading Saudi company in Interior Design and FIT-OUT. At **MIND**, we believe success is not exclusive on owning objectives, success is to make a difference in the industry. Since 2005 here in Riyadh. We aimed to make a variance in the interior design industry, elevating the society's standards and expectations towards interior design and execution techniques.

Today we direct these standards, as the first reference for major companies, and anyone seeks reliable services from a professional team, their slogan is precision.

At **MIND**, We are keen to work on advanced technology and invest our extended experience in the industry to innovate technologies, so we formed the "THINK" team, who focus on doing studies and research on advanced technologies of the industry of interior design and implementation.

At **MIND**, Passion, art, and Professionalism are continuous.

## WHERE WE ARE?

**MIND**  
RIYADH  
NORTH RING ROAD  
HITEEN – RUBEEN PLAZA  
FLOOR 1



# MINDER TEAM

Gathered to redefine the interior design

Gathering **MIND**'s team in one place was not a chance, but rather a planned strategic work. We were keen on building an outstanding team, always looking for development, and can't get enough with success.

In adopt a specialized approach for each sector, we formed a "PLUS" team to include a network of specialist's internal members with all International experts to create this united mix team that can perform the work as it should.

At **MIND** .

**MIND  
PLUS+**

# MINDER

## KEY TEAM MEMBERS



**REEM ALSAHLI**  
chief executive  
officer

8 YEARS OF EXPERIENCE  
IN MIND, PMP®, KPIs®

- Certified Governance Specialist Certified project manager .
- Certified performance. measurement indicators. Practitioner.

- Certified Business Analyst



**AMAL ALSAHLI**  
FOUNER-CUSTOMER  
RELATION MANAGER

19 YEARS OF  
EXPERIENCE

Interior Design  
Consultant



**MOHAMMAD SADIQ**  
PROJECTS MANGER

20 YEARS OF  
EXPERIENCE

Project management  
and  
Strategic Planning



**ASHRAF SALAH**  
SITES MANGER

25 YEARS OF  
EXPERIENCE

Senior Site Manager



**ALAA ASHOR**  
QUALITY CONTROL  
MANGER

13 YEARS OF  
EXPERIENCE IN  
MIND

Architect

**MORE THAN PROFESSIONAL TEAM .  
WE ARE ARTEST ,CREATIVE , PIONEERS.**



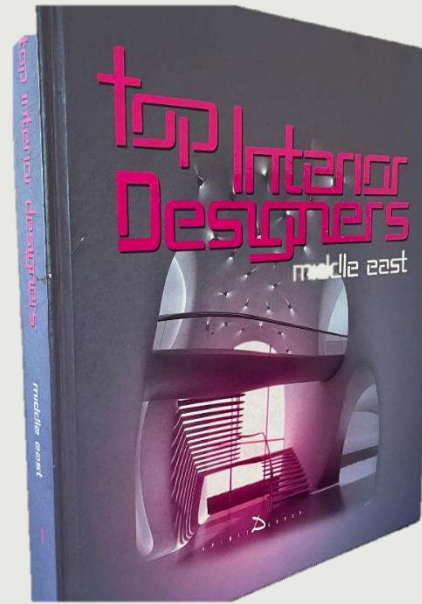
# ACHIEVEMENTS WE ARE PROUD OF



Design of the highest mosque in the world ٢٠٢٤



One of our projects won the best commercial project. **2017**



published one of our projects in the Book of the Best top interior in Middle East . **2020**



Design of the first child-friendly hospital in the ٢٠١٦ Middle East

ACHIEVEMENTS  
WE ARE PROUD  
OF

19

years of experience

1 M

We worked on more than one million square meter.

03

Our projects were centralized in three countries.

200

We trained over two hundred engineers from different Universities.

05

Strategic partnerships with 5 global companies.

+700

We worked on more than seven hundred project.

+1000

We have served more than 1000 clients.



# MIND SERVICES TURNKEY PROJECTS



INTERIOR  
DESIGN



FURNITURE  
MANUFACTURING  
AND SUPPLY



FIT OUT



PROJECTS  
MANGMENT

# MIND SERVICES

## INTERIOR DESIGN

We formed our design solutions according to the needs of each project and its various challenges, to create a thoughtful, different, and distinctive aesthetic spaces. Relying on our diverse experiences.

as we also believe in perfection in our work, we strive to care about the smallest details in the projects.





# MIND SERVICES

FURNITURE SUPPLY & MANUFACTURING



**LAS**  Forma 5

**kano**

**narbutas**

**INCLASS**

**framery**

**PR  
OF**

**B&T**

**FELTOUCH**

We represent leading international furniture brands offering a wide range of products like Office furniture, educational, healthcare, and even All products are of great quality and supported by warranty and after sales service.

We providing Turnkey Solutions all around Saudi Arabia & GCC for over 19 years.

# MIND SERVICES

## PROJECTS MANAGMENT

Resource and time management is our priority and principle in managing the projects we undertake.

Our decisions in projects are based on project management methodology, and this is one of the reasons for our success and commitment in leading projects towards their goals.



## SUPERVISION

Our entrepreneurial role in interior design aligned with our experiences in furnishing projects have made us at MIND a valuable third party during the construction and finishing process. We wear the clients' and entrepreneurs' hat, construction phase. We understand all the details and strive to perfect its quality, and we practice project management and supervision professionally.

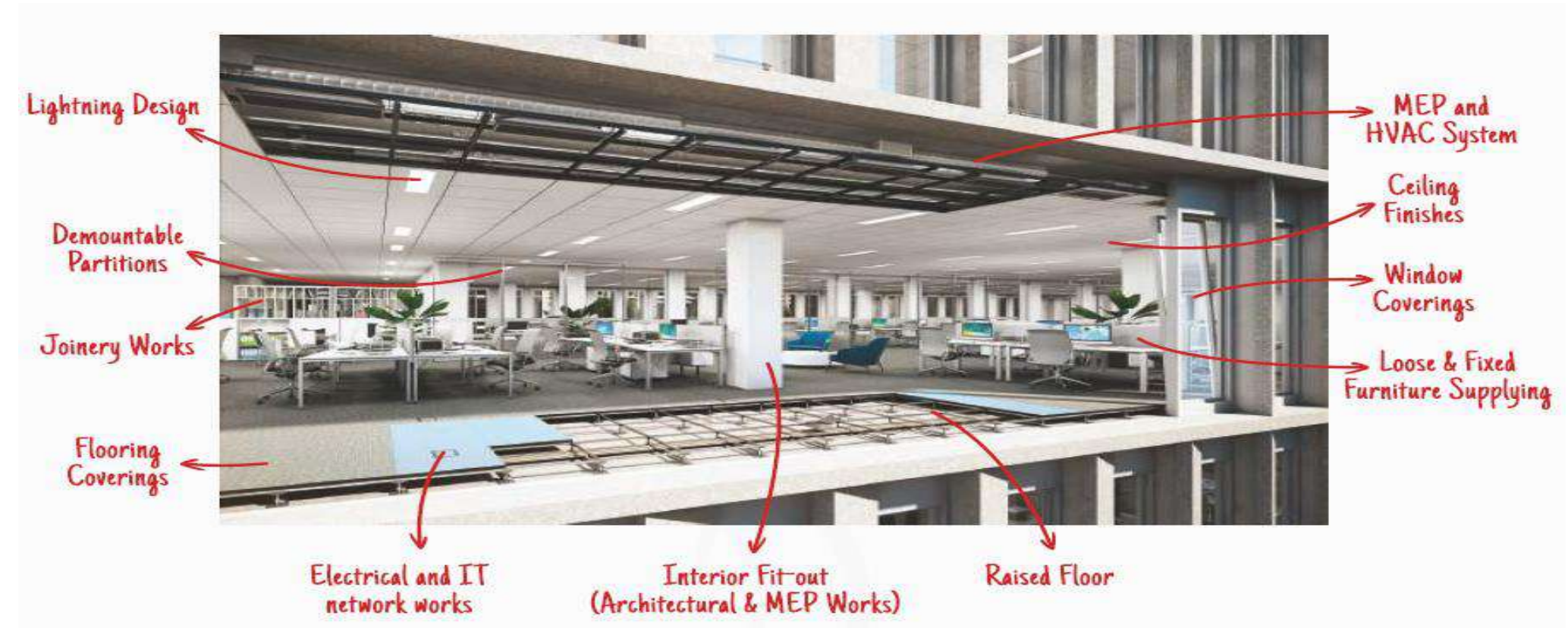


# MIND SERVICES

## FITOUT & IMPLEMENTATION

Through our "Projects Department", we manage and supply all aspects of execution materials, office interiors and decoration (Fit-Out) from A to Z like Partitions, Flooring and Ceilings overall including supply and installation, supported by warranty and after sales service .

The department employs engineers with Civil, Electrical, Mechanical and Architectural disciplines along with many other key positions to ensure the highest quality workmanship and timely deliver



# 01 OFFICES-BUSINESS ENVIRONMENTS PROJECTS



## MIND

We are one of the top experts in design and Fit-Out for work-places and business environments.

BUSINESS SECTORS



# OFFICES-BUSINESS ENVIRONMENTS PROJECTS



SELECTED PROJECTS  
MIND PROJECTS

---

OFFICE – BUSINESS  
ENVIRONMENTS  
PROJECTS



# NEOM Command & Control Building

A project located in NEOM, area of approximately 3,000 square meters. It consists of Offices and control halls with area for innovations.

A very smart building and spaces, and a design that reflects the future of NEOM

## INFORMATION:

- **LOCATION :**NEOM .
- **AREA:** 3000 sqm approx.
- **SCOPE OF WORK:** interior design.
- **YEAR:**2024.





## OFFICES-BUSINESS ENVIRONMENTS PROJECTS

# The Headquarter Of the Foundation Misk Charity.



Developing the business environment and overseeing the **design and implementation of the headquarters the offices of the MISK** Charity Foundation in the Diplomatic Quarter in Riyadh, Designed to reflect the vitality of business in a creative work environment.

### INFORMATION:

- **LOCATION** :Riyadh.
- **AREA**: 1200 sqm approx.
- **SCOPE OF WORK**: REDESIGNING & SUPERVISION .
- **YEAR**:2018.





~~OFFICES-BUSINESS~~ ENVIRONMENTS PROJECTS

الهيئة الملكية لمحافظة العلا  
Royal Commission for AlUla



# The Royal Commission for Al-Ulaa Governorate

The Office of His Highness the Governor  
and the Executive Office.

Based on the long experience of developing offices and executive facilities, the office of his highness the Governor has been designed in a **modern style with touches from the nature of the environment in the Al-Ulaa region**, a wide space with elements a robust design that reflects the nature of Al-Ulaa.

## INFORMATION:

- **LOCATION** :Riyadh .
  - **AREA**: 700 sqm approx. .
  - **SCOPE OF WORK**: TURNKEY PROJRCTT-DESIGN &BUILT.
  - **YEAR**:2019.
- MIND.COM.SA**



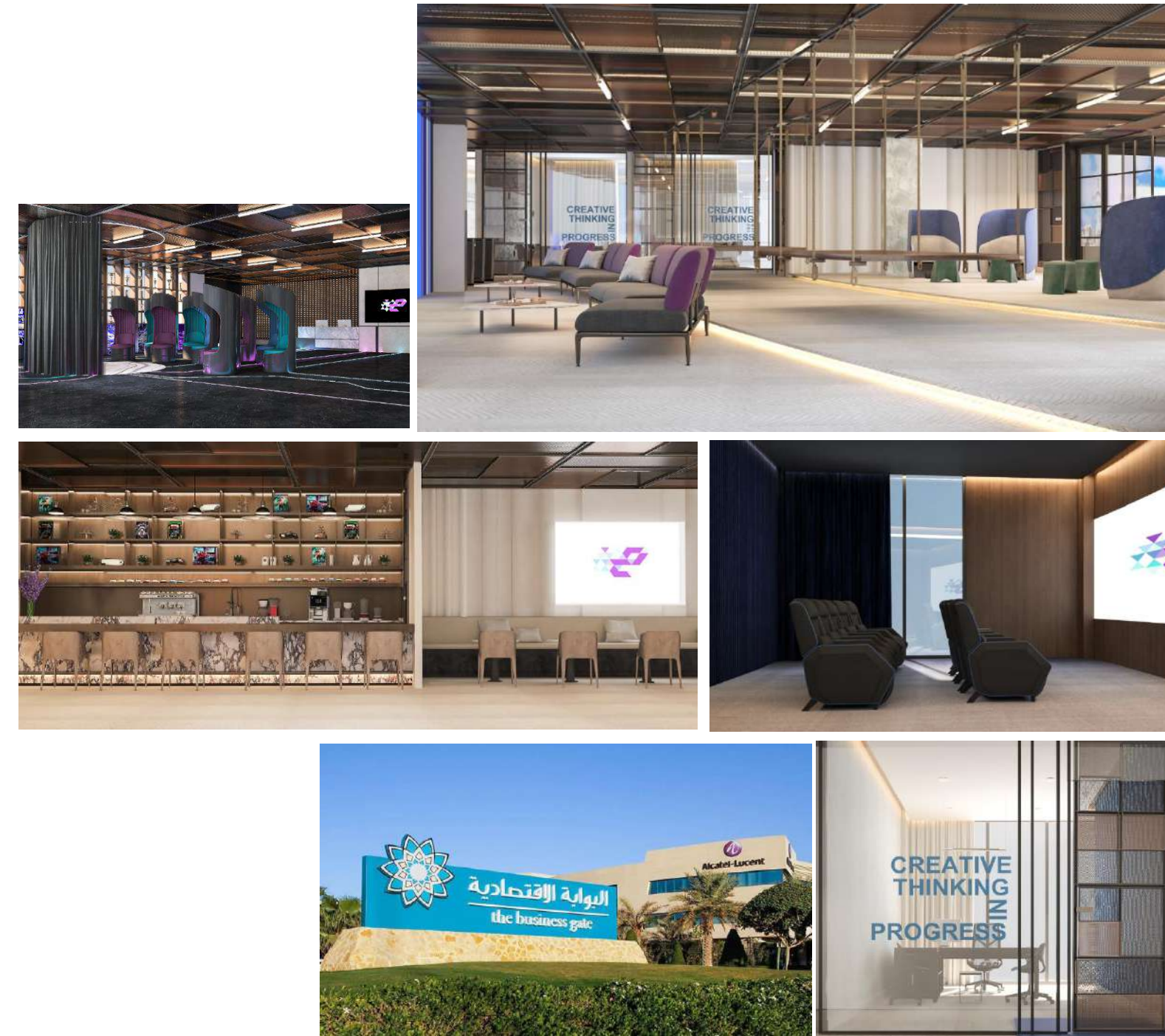


## Saudi Federation of Electronic Sports

A project located in Riyadh, in the gate, on an area of approximately 4,000 square meters. It consists of halls for electronic games and international competitions. It has a simple and elegant design that meets the needs of employees and gamers. It is indeed a very modern and electronic work environment..

### INFORMATION:

- **LOCATION** :Riyadh .
- **AREA**: 4000 sqm approx.
- **SCOPE OF WORK**: INTERIOR DESIGN.
- **YEAR**:2022.





## OFFICES-BUSINESS ENVIRONMENTS PROJECTS



الهيئة الوطنية للأمن السيبراني  
National Cybersecurity Authority

# National Cyber Security Authority

A project located in Riyadh, area of approximately 8,000 square meters. It consists of VVIP halls and salons for It has a luxury and elegant design that meets the needs of users. It is indeed a very luxury environment..

### INFORMATION:

- **LOCATION** :Riyadh .
- **AREA**: 8000 sqm approx.
- **SCOPE OF WORK**: interior design & Fit Out.
- **YEAR**:2020.



# OFFICES-BUSINESS ENVIRONMENTS PROJECTS

## Health Endowment Fund

A project located in Riyadh, its modern and dynamic work environment designed in colors that reflect the Fund identity. combining simplicity and elegance.

### INFORMATION:

- **LOCATION** :Riyadh .
- **AREA**: 600 sqm approx.
- **SCOPE OF WORK**: INTERIOR DESIGN & supervision.
- **YEAR**:2023.





# OFFICES-BUSINESS ENVIRONMENTS PROJECTS



## Badeel Company

The project is located on the 11th floor of the Kingdom Tower. The company specializes in clean and renewable energy activities, and this is reflected in the design, as the design appears in a renewed and simple style, and at the same time it reflects the sobriety and strength of the pif.

### INFORMATION:

- **LOCATION** :Riyadh .
- **AREA**: 600 sqm approx.
- **SCOPE OF WORK**: INTERIOR DESIGN and SUPERVISION .
- **YEAR**:2024.





# OFFICES-BUSINESS ENVIRONMENTS PROJECTS



SITE

## BUSINESS CENTER

Public center at ALRAIDAH Complex.

An open work environment with various facilities such as phone booths, online meeting areas, individual work areas, meeting areas, sitting areas, and rest areas. The design style of the project was a luxurious modern style, and the design goal is to create a suitable and comfortable work environment for everyone.

### INFORMATION:

- **LOCATION** :Riyadh.
- **AREA**: 3800 sqm approx.
- **SCOPE OF WORK**: INTERIOR DESIGN &SUPERVISION.
- **YEAR**:2019.





# OFFICES-BUSINESS ENVIRONMENTS PROJECTS



SITE

## SITE Company

Designing a modern and dynamic work environment on an area of approximately 3000 square meters, the project is located in Riyadh, alraidah complex, the company provide integrated services, the customer experience is developed through implementing an in-house design that helps to achieve the company's objectives.

### INFORMATION:

- **LOCATION** :Riyadh .
- **AREA**: 3000 sqm approx. .
- **SCOPE OF WORK**: INTERIOR DESIGN.
- **YEAR**:2021.





# OFFICES-BUSINESS ENVIRONMENTS PROJECTS



## Sales Center

A customer reception and product display center for one of the leading companies in the field of technology, the design style is a modern minimalist design style with touches that reflect the identity of the company.

### INFORMATION:

- **LOCATION** :Riyadh .
- **AREA**: 600 sqm approx. .
- **SCOPE OF WORK**: INTERIOR DESIGN.
- **YEAR**:2018.





## OFFICES-BUSINESS ENVIRONMENTS PROJECTS

# Tamweel Aloula Company

A project with high technical specifications. In the design, we used smart display technologies such as diagrams and advanced and modern systems. Inspiring, modern and rich design

### INFORMATION:

- **LOCATION** :Khobar .
- **AREA**: 2000 sqm approx.
- **SCOPE OF WORK**: INTERIOR DESIGN.
- **YEAR**:2023.





# OFFICES-BUSINESS ENVIRONMENTS PROJECTS



## Chemanol Company

The design reflects the company's activity in the chemical industries. Clear with simple colors and details give a wonderful effect to the place.

### INFORMATION:

- **LOCATION** :Riyadh .
- **AREA**: 1500 sqm approx.
- **SCOPE OF WORK**: INTERIOR DESIGN.
- **YEAR**:2023.



## OFFICES-BUSINESS ENVIRONMENTS PROJECTS

# King Abdulaziz Center for National Dialogue

Our role was to raise the level of the building's luxury by adding MIND touches, furniture, and artistic pieces that reflect the building's luxury.

### INFORMATION:

- **LOCATION** :Riyadh .
- **AREA**: 12000 sqm approx.
- **SCOPE OF WORK**: INTERIOR DESIGN.
- **YEAR**:2016.





# OFFICES-BUSINESS ENVIRONMENTS PROJECTS



## M1 Company



investment company. In the design, we used iron and copper as basic materials in the design, which gave a beautiful final result. We also took advantage of the reflections of natural lighting in the company center.

### INFORMATION :

- **LOCATION** :Riyadh .
- **AREA**: 1200 sqm Approx.
- **SCOPE OF WORK**: INTERIOR DESIGN & FITOUT .
- **YEAR**:2019.





## OFFICES-BUSINESS ENVIRONMENTS PROJECTS

# National Center for Palms & Dates

Designing work environment by getting inspired from environmental materials such as wood, stone, and ropes. The use of a monochrome color scheme

state for the use of one color and its shades in specific proportions to give that dimension, breadth and harmony and it contains multiple elements, decorations and shapes.

### INFORMATION:

- **LOCATION** :Riyadh.
- **AREA**: 1200 sqm Approx.
- **SCOPE OF WORK**: TURNKEY PROJRCT-DESIGN &BUILT.
- **YEAR**:2018.

MIND.COM.SA





# OFFICES-BUSINESS ENVIRONMENTS PROJECTS

## SASO

Re-designing a project, which is the authority issuing the Saudi Building Code, which issues regulations, specifications and standards, and this is the challenge to provide a design that meets the requirements.

### INFORMATION:

- **LOCATION** :Riyadh.
- **AREA**: 6000 sqm Approx.
- **SCOPE OF WORK**: INTERIOR DESIGN .
- **YEAR**:2018.



الهيئة السعودية للمواصفات والمقاييس والجودة  
Saudi Standards, Metrology and Quality Org.

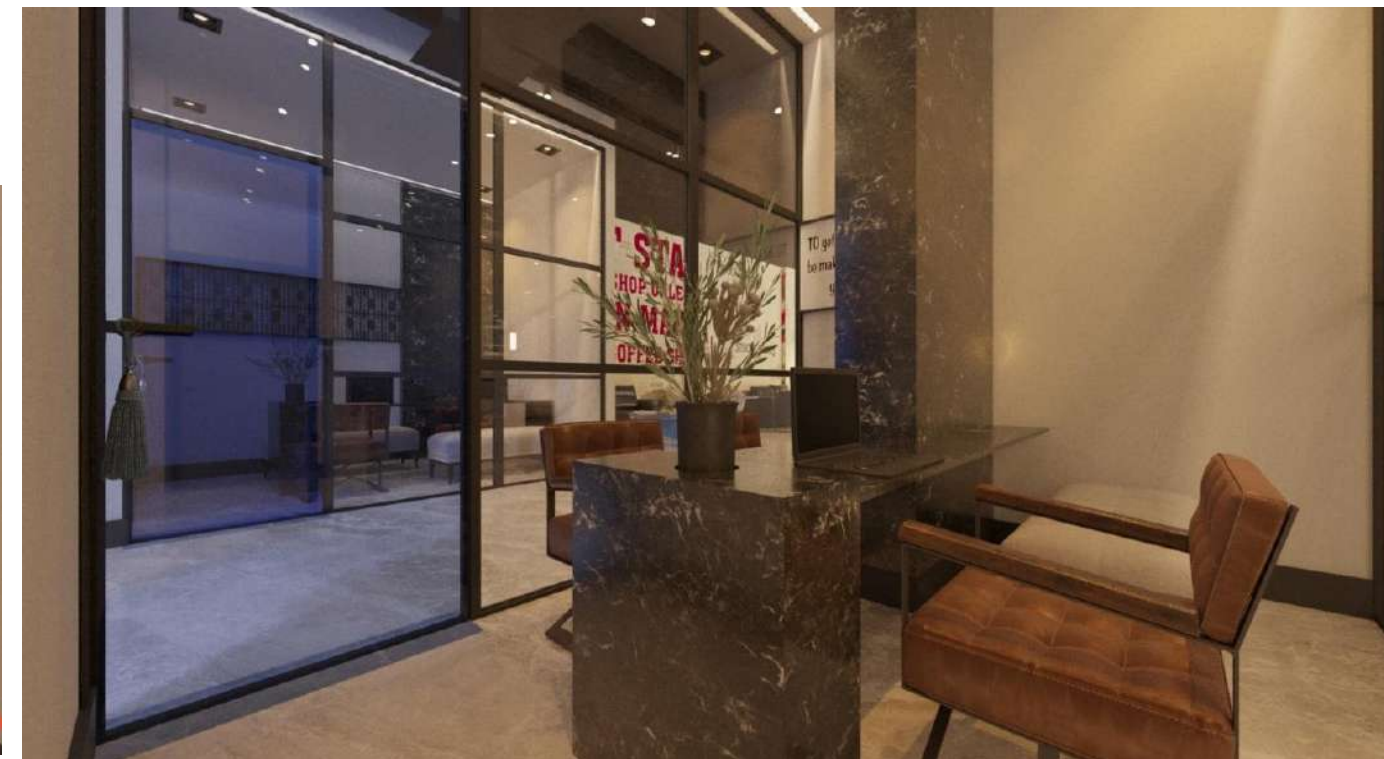


# MUSHARAKA LOUNG

A lounge belonging to a financial company for trading, sharing ideas and building relationships. It was designed in a way that achieves these goals, reflects the company's values, and enhances reliability.

**INFORMATION :**

- **LOCATION :** Riyadh .
- **AREA:** 400 sqm Approx.
- **SCOPE OF WORK:** INTERIOR DESIGN & SUPERVISION .
- **YEAR:**2023.





## OFFICES-BUSINESS ENVIRONMENTS PROJECTS



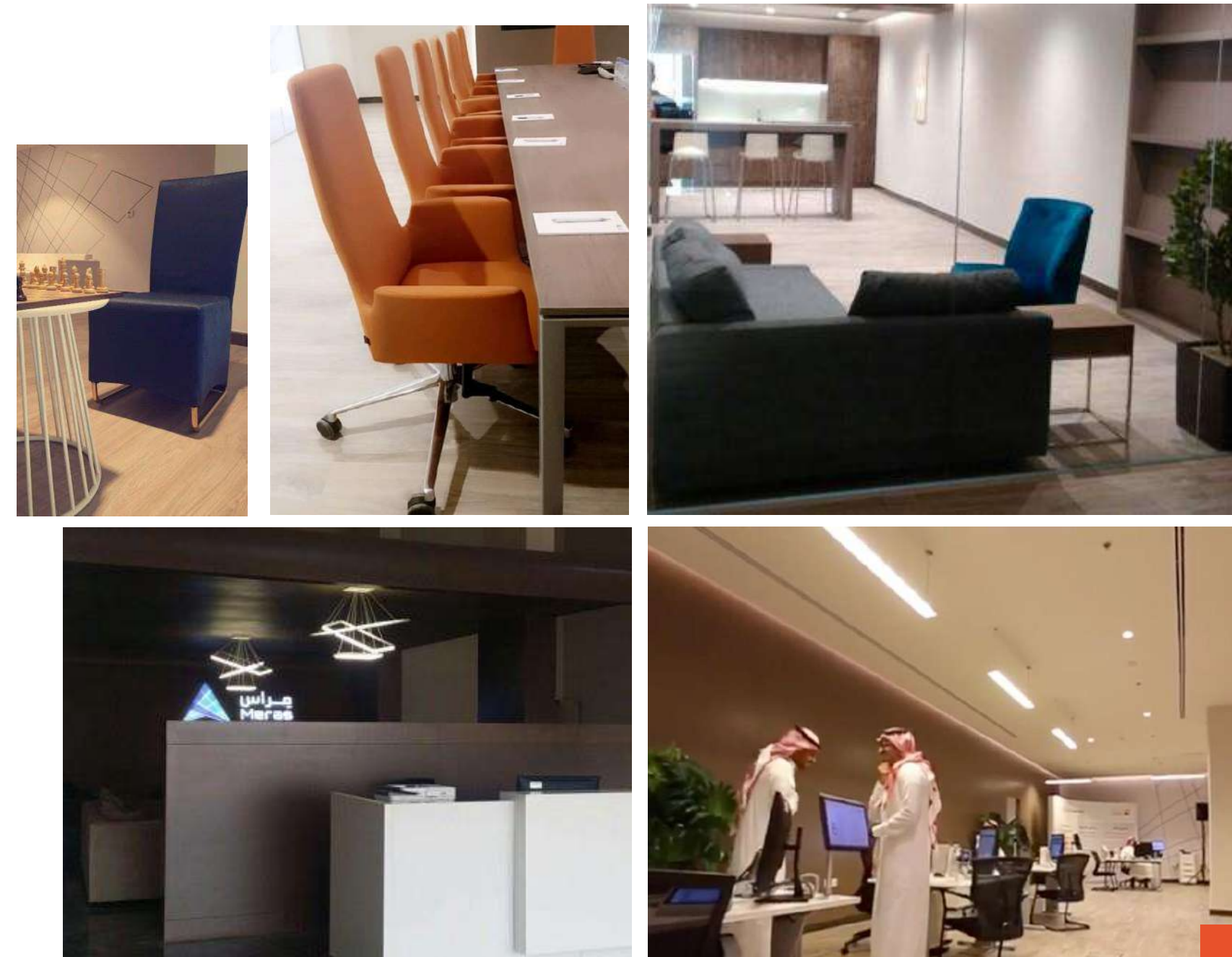
# MERAS Center of the Ministry of Trade

Designing a modern and dynamic work environment on an area of approximately 1000 meters square, the project is located in Riyadh, King Abdul Aziz Road, and considered as the first for the Ministry of Commerce to provide integrated services to business owners the customer experience is developed through implementing an in-house design that helps to achieve the center's objectives in providing a service integrated and fast

### INFORMATION:

- **LOCATION** :Riyadh .
- **AREA**: 1000 sqm approx.
- **SCOPE OF WORK**: INTERIOR DESIGN &SUPERVISION.
- **YEAR**:2017.

MIND.COM.SA



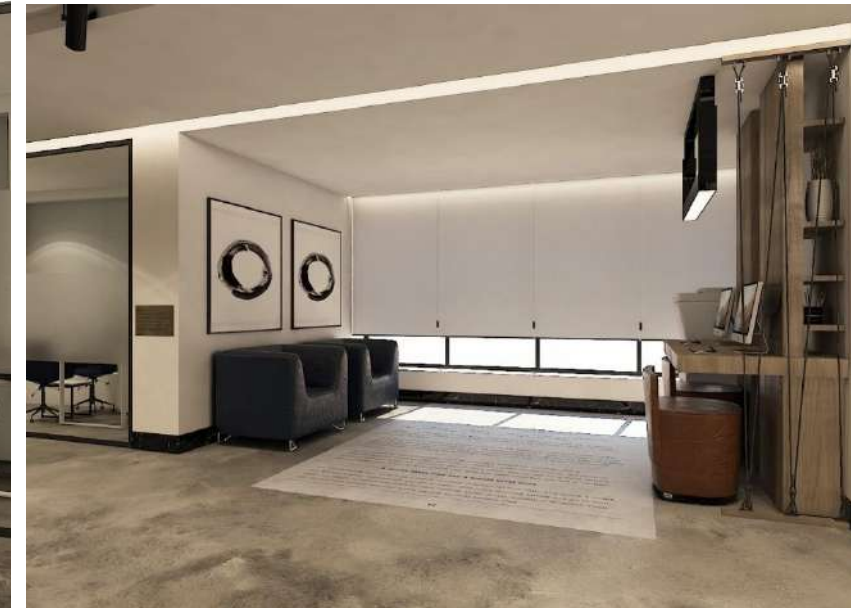
# OFFICES-BUSINESS ENVIRONMENTS PROJECTS

## TAYA real state Company

A shared work environment designed so that every square meter of the project can be invested to be re-rented, full of new and distinctive ideas.

### INFORMATION:

- **LOCATION :** Riyadh.
- **AREA:** 2000 sqm Approx.
- **SCOPE OF WORK:** INTERIOR DESIGN .
- **YEAR:** 2016.





OFFICES-BUSINESS ENVIRONMENTS PROJECTS

# TILAD Corporation Environmental Consulting

Creating a work environment inspired by environmental elements like wood, stone, and ropes entails utilizing a monochrome color scheme. This scheme involves employing one color and its shades in precise proportions to imbue the space with dimension, breadth, and harmony, while incorporating various elements, decorations, and shapes.

## INFORMATION:

- **LOCATION** :Riyadh.
- **AREA**: 1000 sqm Approx.
- **SCOPE OF WORK**: INTERIOR DESIGN& FITOUT .
- **YEAR**:2018.





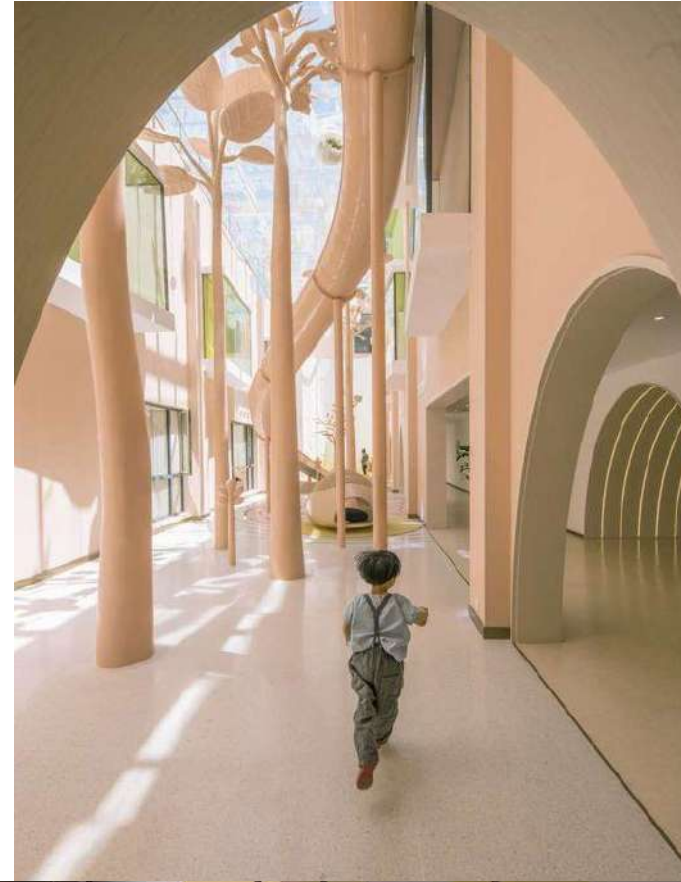
## OFFICES-BUSINESS ENVIRONMENTS PROJECTS

# My 2<sup>nd</sup> Home Nursery

A project located in Riyadh, an area of approximately 7,000 square meters. The building is an office tower consisting of 14 floors. It consists of offices, meeting rooms, and public facilities.

### INFORMATION:

- **LOCATION** :Riyadh .
- **AREA**: 7000 sqm approx.
- **SCOPE OF WORK**: INTERIOR DESIGN. And FITOUT
- **YEAR**:2019.





# OFFICES-BUSINESS ENVIRONMENTS PROJECTS



## WAFI Center

The project is located in Riyadh  
Designing the customer reception hall with  
the display areas industrial style.

### INFORMATION:

- **LOCATION** :Riyadh .
- **AREA**: 2000 sqm approx.
- **SCOPE OF WORK**: INTERIOR DESIGN.
- **YEAR**:2018.





## OFFICES-BUSINESS ENVIRONMENTS PROJECTS

# National Housing Company

A project located in Riyadh, an area of approximately 7,000 square meters. The building is an office tower consisting of 14 floors. It consists of offices, meeting rooms, and public facilities.

### INFORMATION:

- **LOCATION** :Riyadh .
- **AREA**: 7000 sqm approx.
- **SCOPE OF WORK**: INTERIOR DESIGN. And FITOUT
- **YEAR**:2019.





# HOSPITALITY PROJECTS

## PROUDLY WORKED WITH



SELECTED PROJECTS  
MIND PROJECTS

---

HOSPITALITY  
SECTOR.



# HOSPITALITY PROJECTS

## Mövenpick Hotel

A project located in Makkah –hagar tower ,

The tower contains:

- 10 floors
- 1200 rooms
- 403 Suites

### INFORMATION:

- **LOCATION :**MAKKAH.
- **SCOPE OF WORK:** INTERIOR DESIGN.
- **YEAR:**2021.



**LuXuRy MODERN INTERIOR**  
MÖVeNPICK MAKKAH





# HOSPITALITY PROJECTS

## FAIRMONT Hotel

### Design of the highest mosque in the world

- A project located in MAKKAH clock tower , an area of approximately 5,000 square meters. The building is the highest mosque in the world.
- The Height is (150,370) M.
- Direct view of the holy Mosque and the holy Kaaba.
- Chosen by the international hotel "Fairmont" to be the operator.
- Consists of 2 floor

The capacity of prayers up of 2500 person.

#### INFORMATION:

- **LOCATION :**MAKKAH .
- **AREA:** 5000 sqm approx.
- **SCOPE OF WORK:** INTERIOR DESIGN.
- **YEAR:**2024.





# HOSPITALITY PROJECTS

## Swissotel Hotel

A project located in Makkah , consisting of Lounges & Restraints & meeting rooms, and public facilities.

### INFORMATION:

- **LOCATION** :Makkah .
- **AREA**: 47 floor.
- **SCOPE OF WORK**: INTERIOR DESIGN.
- **YEAR**:2024.

swissotel  
Hotels & Resorts





# HOSPITALITY PROJECTS

## BARIRA The Valley Resort



The project is located in one of the natural valleys in the Arqah region in Riyadh, The geographical nature of the project and the utilization have been respected, to enjoy the resort's visitors with rides and landscapes, it was designed into The hotel, residential villas, a group of restaurants and cafes, and a center. Works and outdoor areas for gardens and swimming pools, designing the interior of the project was made in several styles. **The hotel is designed in a modern style, while the restaurants varied between the French and the Eastern English.**

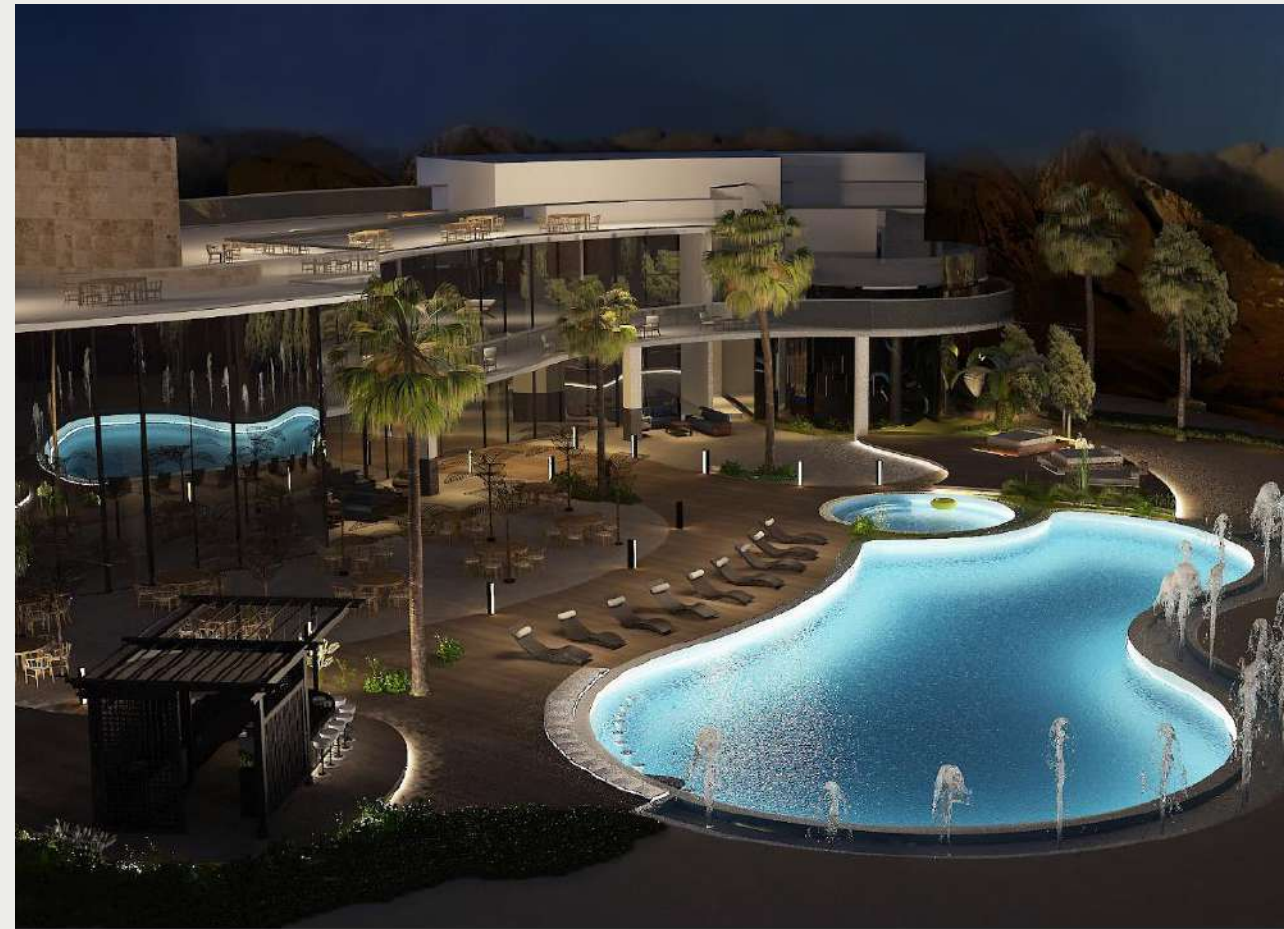
### INFORMATION :

- **LOCATION :** Riyadh .
- **AREA:** 15000 sqm Approx.
- **SCOPE OF WORK:** INTERIOR DESIGN .
- **YEAR:**2017.





# 3D perspectives





# Real pictures





# HOSPITALITY PROJECTS

## MOTIARA Hotel

The project is located on the road of King Fahd in Riyadh, and it is a tower Multi-story, 14 floors, in addition to housing and residence facilities in which it contains a group of restaurants and a large lobby containing a reception with exhibitions and boutiques, add party halls, a club and a center for business, it is all **designed in a modern classical style that reflects luxury, developed brand for hotels and guesthouses.**

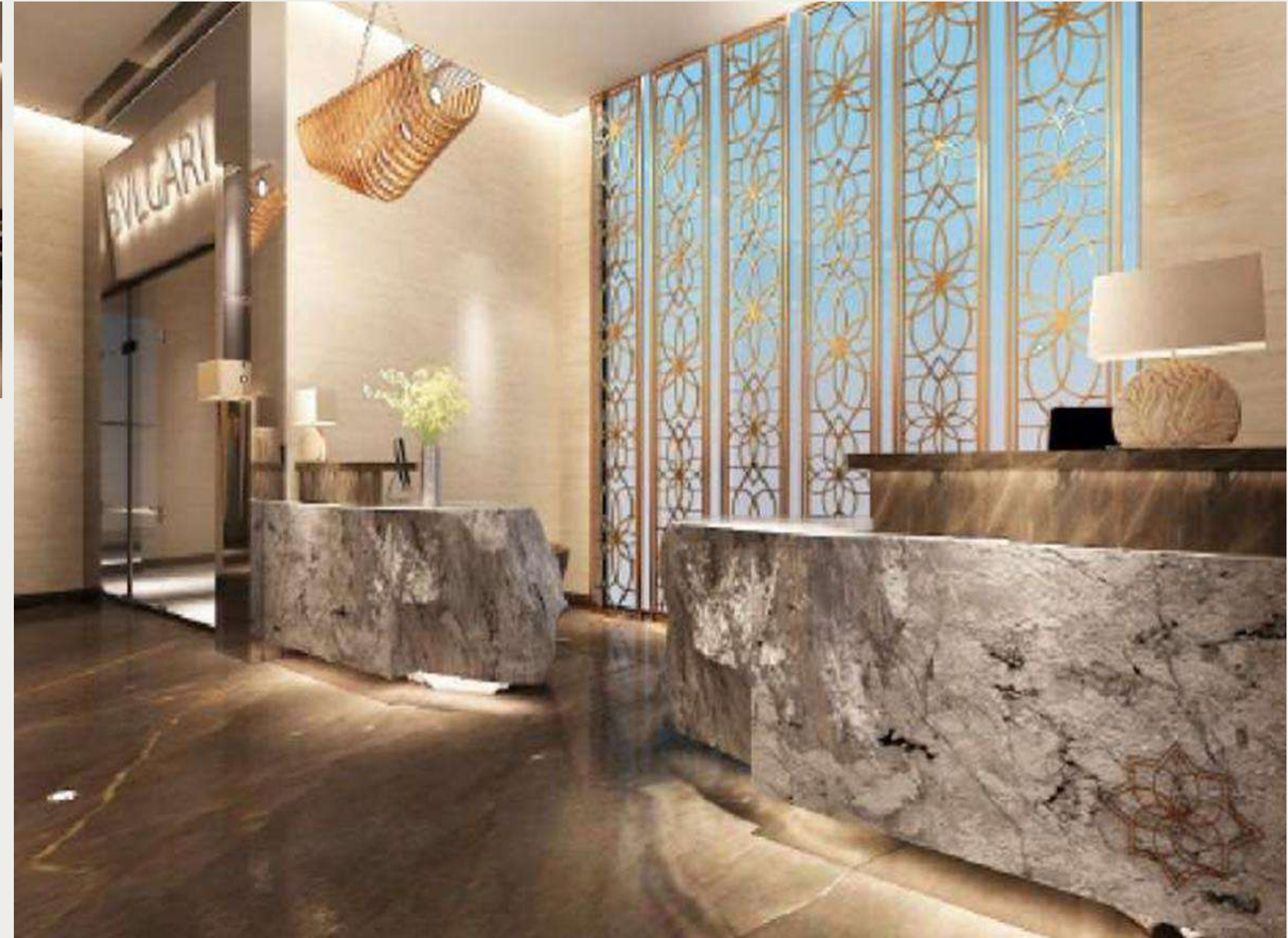
### INFORMATION :

- **LOCATION** :Riyadh .
- **AREA**: 17000 sqm Approx.
- **SCOPE OF WORK**: INTERIOR DESIGN & FURNITURE MANUFACTURING.
- **YEAR**:2022.





# 3D perspectives





# Real pictures





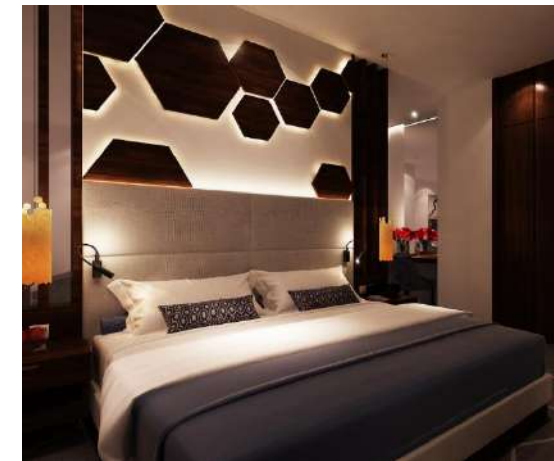
# HOSPITALITY PROJECTS

## ANATARA Hotel

The project is located on the road of King Fahd in Riyadh, there are different facilities in which it contains a group of restaurants and a large lobby containing a reception with exhibitions and boutiques, add party halls, a club and a center for business, it is all **designed in a contemporary style that reflects the hotel brand.**

### INFORMATION :

- **LOCATION** :Riyadh .
- **AREA**: 7000 sqm Approx.
- **SCOPE OF WORK**: INTERIOR DESIGN.
- **YEAR**:2016.





# HOSPITALITY PROJECTS

## DARA Hotel

The first branch of the project is located in Riyadh , target of the project is reflects the local culture in modern way with economic materials, MIND design the first branch and the manual book of design and the brand quid-line for the for the future branches, The hotel contain of many facilities like res lounges, restaurant, 5 types of rooms and wings.

### INFORMATION :

- **LOCATION** :Riyadh .
- **AREA**: 10,000 sqm Approx.
- **SCOPE OF WORK**: INTERIOR DESIGN.
- **YEAR**:2017 .





# HOSPITALITY PROJECTS

## MANSARD GALLERY

The project is located on the road of Prince Mohammed bin Salman and is a luxury gallery containing two-floor reception with exhibitions area and boutiques, and multi-purpose use halls, it is all designed in a modern classical style that reflects luxury, developed brand for hotels and hospitality.

### INFORMATION :

- **LOCATION :** Riyadh .
- **AREA:** 2000 sqm Approx.
- **SCOPE OF WORK:** INTERIOR DESIGN.
- **YEAR:**2023.

MANSARD  
RIYADH  
A RADISSON COLLECTION HOTEL





# 3D perspectives



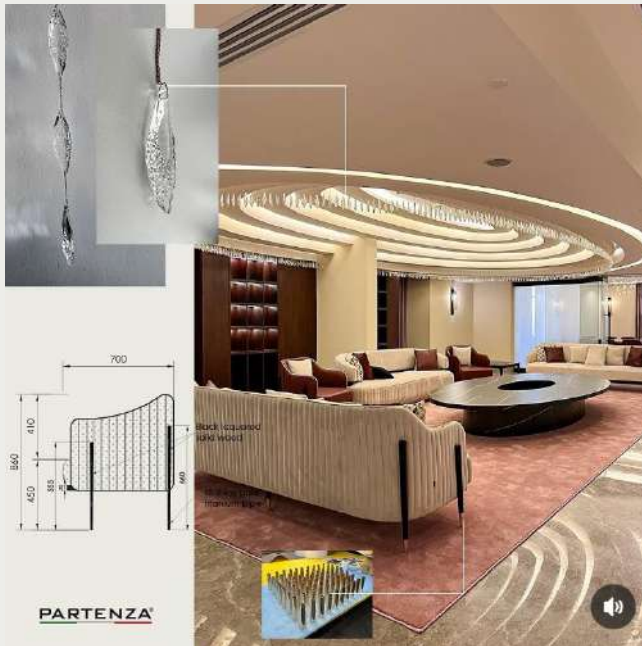
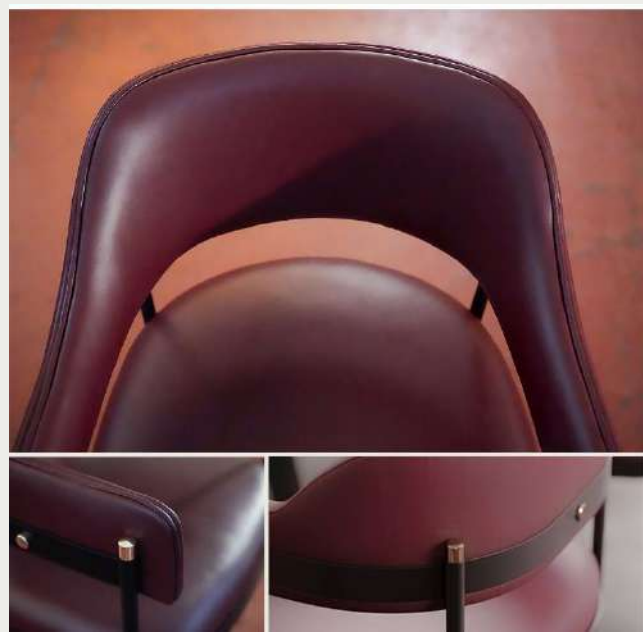
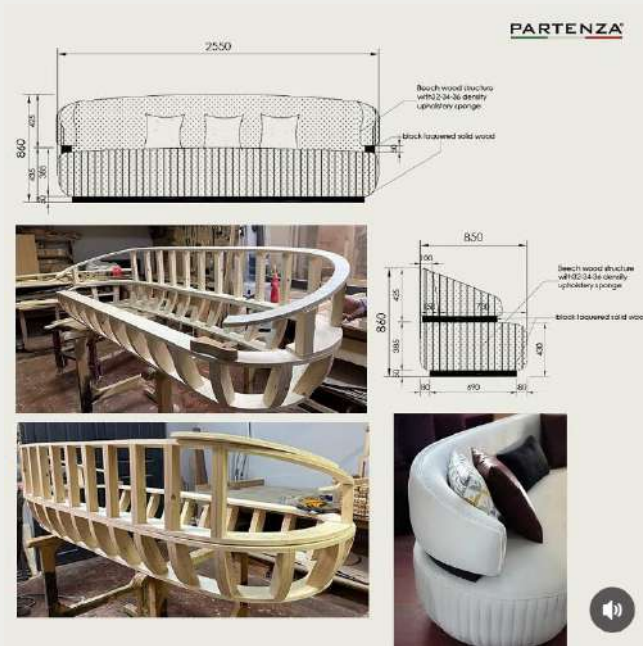


# Real pictures





# Furniture





# HOSPITALS, HEALTH CARE PROJECTS

## PROUDLY WORKED WITH





SELECTED PROJECTS  
MIND PROJECTS

---

HEALTH CARE  
AND HOSPITALS.



# HEALTH CARE PROJECTS

## We Design Healing Environments



## ACHIEVEMENTS

First friendly children hospital in middle east.  
**KFMC**

**01**

**24**

24 health care projects

MIND is the first consultant specialist in healthcare interior design in Saudi Arabia

ARCHITECTURAL SERVICES				URBAN DESIGN			
RANK	PRACTICE	COUNTRY	FEE INCOME US \$ MILLION	RANK	PRACTICE	COUNTRY	FEE INCOME US \$ MILLION
1	Owens Corning	USA	470	1	IFI Group	Canada	28
2	Nikken Seikei	Japan	423.8	2	Genstar	USA	18
3	Burns	South Korea	220	3	RTKL Associates	USA	17.1
4	IFC Group	Saudi Arabia	210	4	MBG-EMTB	Australia	17
5	EDR	USA	196.5	5	Barclay Wilmore	UK	9.5
6	Perkins+Will	USA	185.3	6	Woodsen Seaton	Japan	8.1
7	Anders	China	173	7	ACKT IDOM	Spain	8
8	Skanska	Canada	172.1	8	Shimizu	South Korea	7.8
9	DCM	USA	156	9	Perkins+Will	USA	7.2
10	EDR	USA	149.5	10	Atkins and Mortenson	UK	7

WA100 2015: Specialism tables  
The top architectural firms in each specialism ranked by fee income



### Sereries

Buildings Architecture  
Interior design  
Building engineering (mechanical, structural, electrical)  
Landscape architecture  
Urban planning  
Civil engineering

### Health care Sereries

Developing healthcare strategies  
Creating healthcare environments  
Shaping smart cities and healthy community

### Areas of Expertise

Science  
Healthcare  
Education  
Mid & High rise  
Mixed Use  
Museums  
Commercial and retail

### Health care Areas of Expertise

Acute Health Care  
Primary & Community Healthcare  
Behavioral/ Mental health  
Clinical specialties

**69**

working in 69 offices worldwide

**2,400+**

a staff base of over 2,400

**40**

years of global experience

**10**

years locally

**900+**

healthcare projects

**24**

in the region

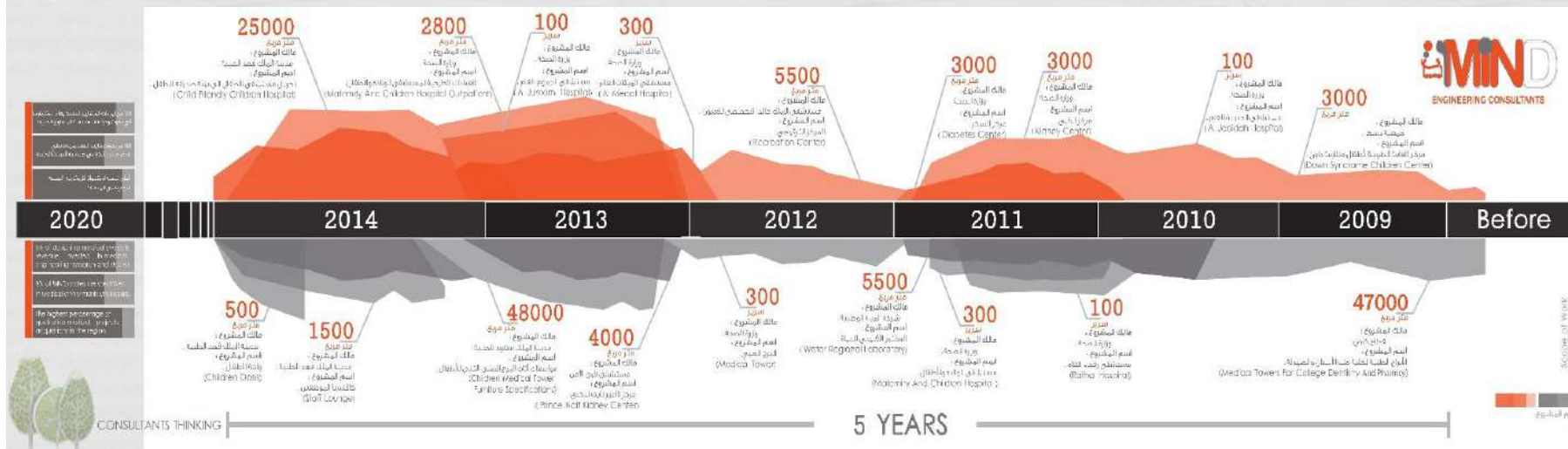
## Collaboration

MIND and IBI are creating a unique collaboration in Saudi Arabia to deliver professional design consultancy services as a one entity.

We Bring together an expert knowledge of International best practice coupled with local knowledge, sensitivity and a proven track record in designing and delivering highly complex projects across many sectors.



# OUR PROJECT'S



# OUR PARTNER





# DEVELOPMENT REAL ESTATE SECTOR

## ROUDLY WORKED WITH



MANSARD  
RIYADH  
A RADISSON COLLECTION HOTEL

HUB



Al Yamam  
Investment & Development  
استثمار وتطوير





SELECTED PROJECTS  
MIND PROJECTS

---

REAL ESTATE  
DEVELOPMENT  
SECTOR



## REAL ESTATE DEVELOPMENT SECTOR

# Riyadh Hub Complex

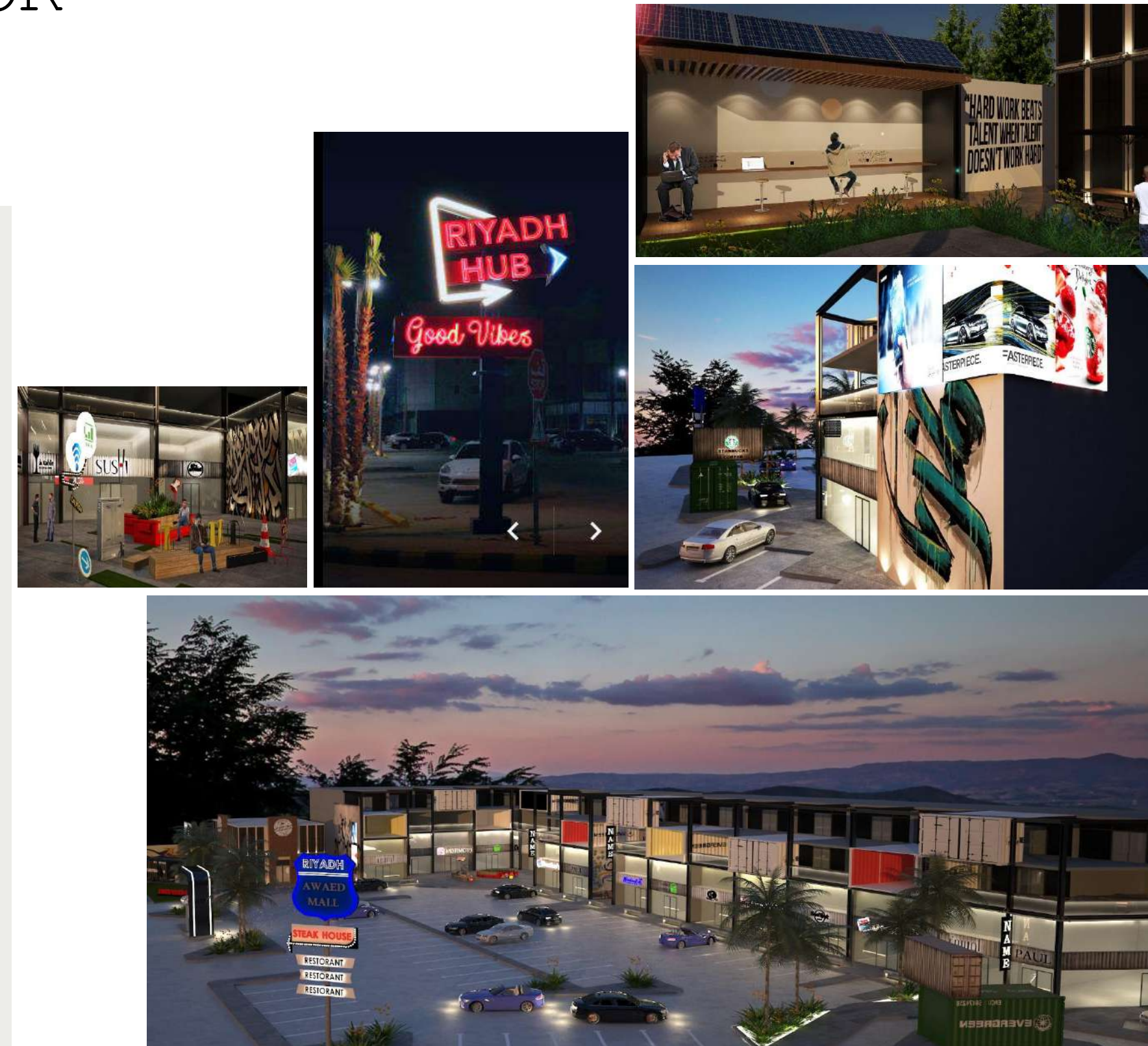
HUB

The design of the Riyadh Hub project, which is located in the Al-Nakhil neighborhood in Riyadh, got the award of the Global Award Priority Organization as a recommended project and classified as one of the best commercial projects. In 2017, the industrial-style project is distinguished and described as executing techniques in which the actual costs are managed for the project to achieve that international classification, in addition to its distinction by determining the rental areas and making use of the real estate land as much as possible to achieve good returns for the project.

In addition to the global project classification, the complex is considered locally as one of the most attractive projects for young people.

### INFORMATION :

- **LOCATION :** Riyadh .
- **AREA:** 7000 sqm Approx.
- **SCOPE OF WORK:** TURNKEY PROJCT-DESIGN & BUILT
- **YEAR:** 2017.





# REAL ESTATE DEVELOPMENT SECTOR

## ALREEM COMPOUND

Interior design for 300 residential units divided into 7 prototype villas, apartments, and townhouses

### INFORMATION :

- **LOCATION** :Riyadh .
- **AREA**: ٢٠,٠٠٠ sqm Approx.
- **SCOPE OF WORK**: INTERIOR DESIGN.
- **YEAR**:2015.





## REAL ESTATE DEVELOPMENT SECTOR

# Turki square

We developed the facades in the Spanish style, and one of our scope of work was to design the external lighting and the landscape so that the project would be a distinctive architectural facade known in Riyadh.

### INFORMATION :

- **LOCATION** :Riyadh .
- **AREA**: 6000 sqm Approx.
- **SCOPE OF WORK**: INTERIOR DESIGN & SUPERVISION .
- **YEAR**:2023.





## REAL ESTATE DEVELOPMENT SECTOR

# ALQASEEM STRIPMALL

The project consist of 33 rent area :

- 24 shops, 15 of them consist Ground and Mezzanine floor.
- 6 drive thru shops (3 of them consist two floors)
- Huge cinema (Three floors)
- 2 micro shop

### INFORMATION :

- **LOCATION :** Buraydah.
- **AREA:** 15000 sqm Approx.
- **SCOPE OF WORK:** all designs .
- **YEAR:**2020.





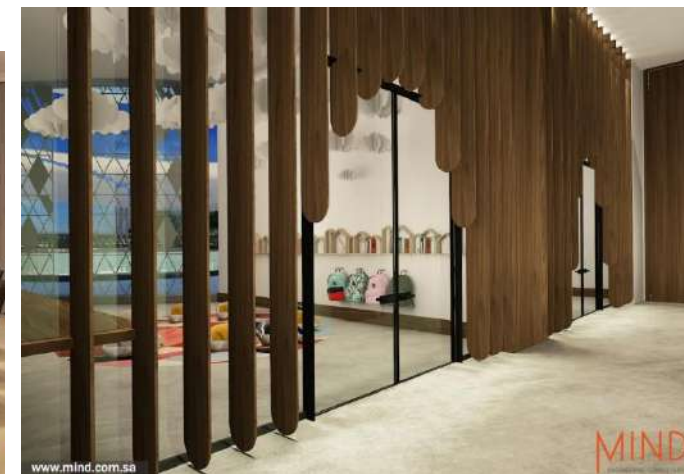
## REAL ESTATE DEVELOPMENT SECTOR

# ALMORABAA Twins Towers

The project is located in ALMORABAA region in Riyadh, the project is consist of two towers linked to each other with a clubhouse building, the first tower is a business tower consisting of rental offices, lounges, a public business center, and other facilities that serve the offices, the other tower is rent apartments, each tower 42 floors.

### INFORMATION :

- **LOCATION :** Riyadh .
- **AREA:** 40.000 sqm Approx.
- **SCOPE OF WORK:** INTERIOR DESIGN.
- **YEAR:**2019.





# COMMERCIAL AND DEVELOPMENT REAL ESTATE SECTOR

## PROUDLY WORKED WITH





SELECTED PROJECTS  
MIND PROJECTS

---

COMMERCIAL  
SECTOR



# MANSARD GALLERY

The project is located on the road of Prince Mohammed bin Salman and is a luxury gallery containing two-floor reception with exhibitions area and boutiques, and multi-purpose use halls, it is all designed in a modern classical style that reflects luxury, developed brand for hotels and hospitality.

## INFORMATION :

- **LOCATION** :Riyadh .
- **AREA**: 2000 sqm Approx.
- **SCOPE OF WORK**: INTERIOR DESIGN.
- **YEAR**:2023.





# 3D perspectives





# Real pictures

MANSARD  
RIYADH  
A RADISSON COLLECTION HOTEL





## COMMERCIAL SECTOR

# VOGUE Cafe

One of the branches of the **world international Vogue**, which is the first branch in the Kingdom. Fine Dining, located in the Riyadh Park Center, north of the city of Riyadh, in addition to its activities. The main product includes displays of major brands of jewelry and fashion. The site was designed to contain this diversity of activities and maintain the prominence of the world Luxury Commercial Vogue.

### INFORMATION :

- **LOCATION** :Riyadh .
- **AREA**: 1300 sqm Approx.
- **SCOPE OF WORK**: INTERIOR DESIGN & FURNITURE MANUFACTURING.
- **YEAR**:2018.





## COMMERCIAL SECTOR

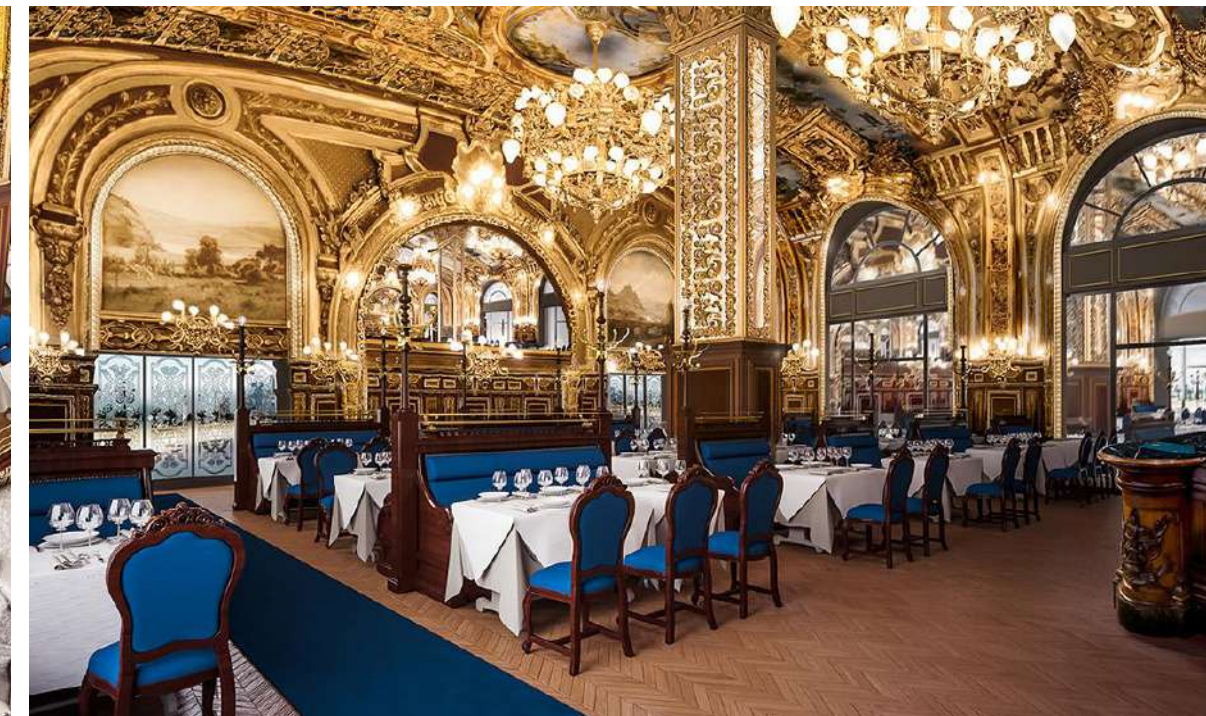
# Le train bleu restraint- ALDOHA



We were appointed as a consultant for the design and selection of fixed and mobile furniture pieces, and to prepare executive details for manufacturing.

### INFORMATION :

- **LOCATION :**QATAR -DOHA .
- **AREA:** ٢٠٠٠sqm Approx.
- **SCOPE OF WORK:** FURNITURE CONSULTANT .
- **YEAR:**2017.





## COMMERCIAL SECTOR

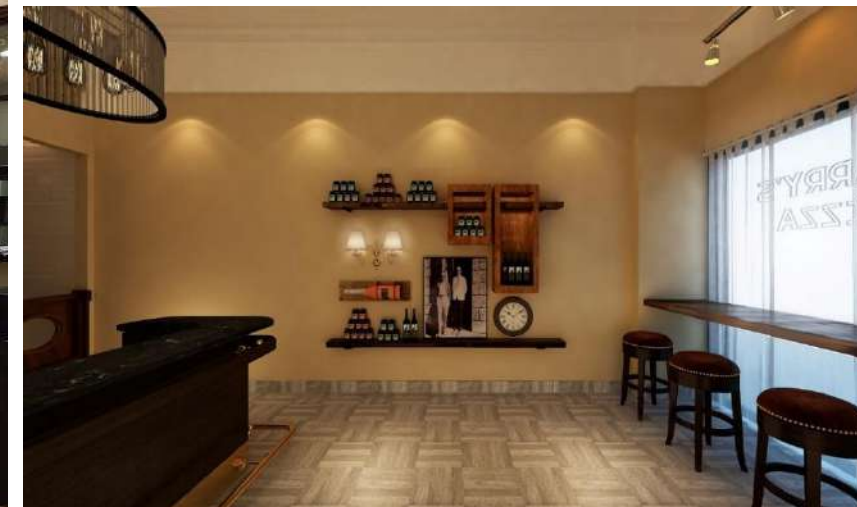
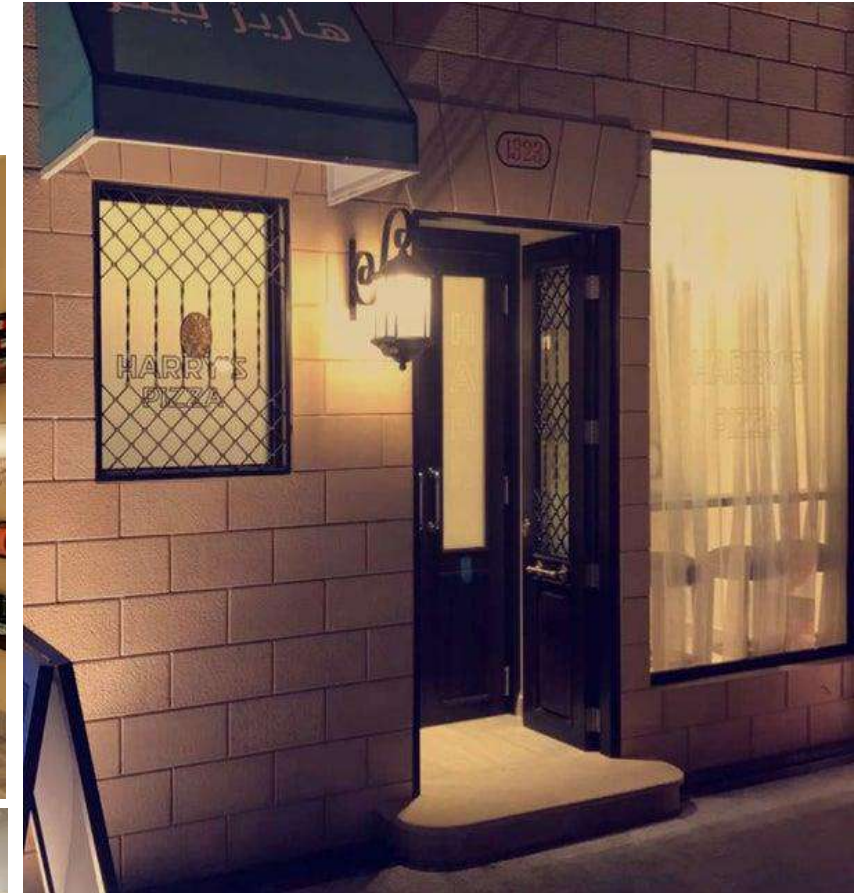
# HARRYS PIZZA.

Harry's is the sister brand to Cipriani.  
specializing in pizza.

Casual and simple design , We have done all the designs and  
prepared the guide book for the future branches.

### INFORMATION :

- **LOCATION** :Riyadh .
- **AREA**: 200 sqm Approx. For branch.
- **SCOPE OF WORK**: INTERIOR DESIGN.
- **YEAR**:2017.





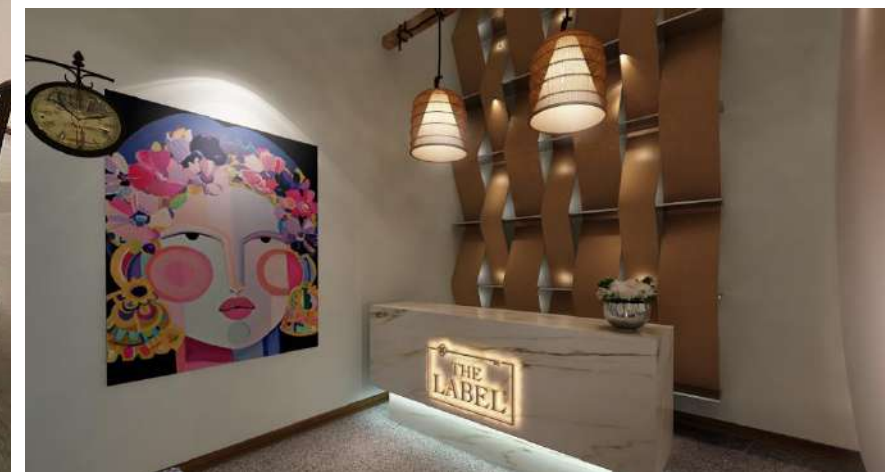
## COMMERCIAL SECTOR

# The Label Spa

A spa and wellness center located on the road King Abdul Aziz in Riyadh is one of the **most distinguished projects by merging design styles**, combined with the project 3 design models in a Dramatic style, the Tropical with the oriental style decorated in glazed and Arabic calligraphy, and pop art-style panels and colors, it is a masterpiece that gives the visitor a unique and unrepeatable experience.

### INFORMATION :

- **LOCATION** :Riyadh .
- **AREA**: 800 sqm Approx. 0
- **SCOPE OF WORK**: INTERIOR DESIGN.
- **YEAR**:2019.





## COMMERCIAL SECTOR

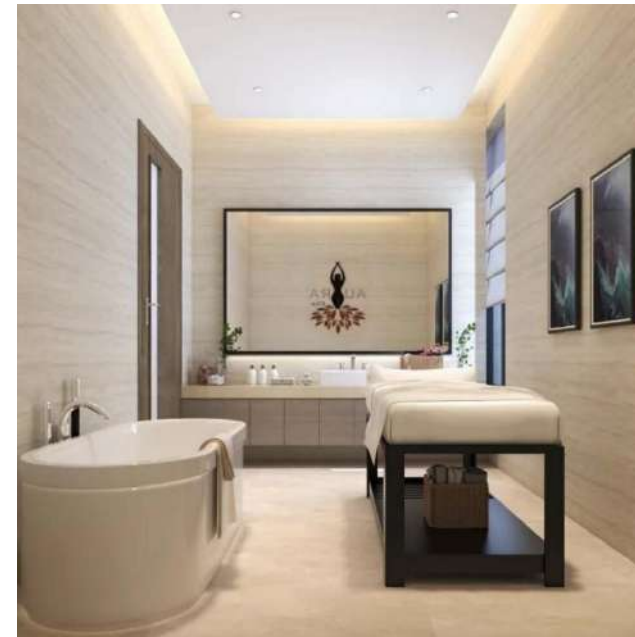


# AURA elite GYM & SPA.

Luxury women's center gym and spa that offers all services, consisting of , restaurants, a coffee shop, a women's salon, and a nursery

### INFORMATION :

- **LOCATION** :Jeddah -abhor .
- **AREA**: 4000 sqm Approx.
- **SCOPE OF WORK**: INTERIOR DESIGN.
- **YEAR**:2022.





## COMMERCIAL SECTOR

# PLENTY Center

Interior design for plenty center , which contains a group of luxurious restaurants and cafes, and contains a concept store, beauty salon, and various facilities

### INFORMATION :

- **LOCATION** :Riyadh .
- **AREA**: 5000 sqm Approx.
- **SCOPE OF WORK**: INTERIOR DESIGN.
- **YEAR**:201<sup>^</sup>.







# COMMERCIAL SECTOR

## PROBAGUETTE Cafe

A group of French bakeries and a café. The project was designed with a character of ancient French bakeries, with modern identity and colors, distinguished the project offers a variety of baked goods and multiple pallets displaying in an attractive way for the shopper, enabling the visitor to view every day baked goods. In addition, its exterior façade so that passers-by can explore bakeries from outside, which is one of the ways to attract costumers.

### INFORMATION :

- **LOCATION :** Riyadh .
- **AREA:** 700 sqm Approx.
- **SCOPE OF WORK:** INTERIOR DESIGN.
- **YEAR:**2019.





## COMMERCIAL SECTOR

# Scramble Center.



The Scramble Entertainment Center is located in North Riyadh it is two floors and is considered one of the first entertainment and games centers designed with a new identity that attracts the target group, and the project design is distinguished in addition to its aesthetics it applies the highest standards of safety for children, youth and all users.

### INFORMATION :

- **LOCATION :** Riyadh .
- **AREA:** 3600 sqm Approx.
- **SCOPE OF WORK:** INTERIOR DESIGN.
- **YEAR:**2019.





## COMMERCIAL SECTOR

# ALMANEA SHOPS

Manufacture and installation of display units in a group of showrooms for electrical appliances.

### INFORMATION :

- **LOCATION** :around the kingdom
- **AREA**: ١٥٠٠ sqm Approx. For branch.
- **SCOPE OF WORK**: FURNITURE MANUFACTURING.
- **YEAR**:2023.





# COMMERCIAL SECTOR

## RICHY SHOPS

We designed all Richy branches around the Kingdom and were supervised to be the luxury brand of men's clothing.

### INFORMATION :


- **LOCATION** :around the kingdom
- **AREA**: 300 sqm Approx. For branch .
- **SCOPE OF WORK**: INTERIOR DESIGN & supervision .
- **YEAR**:2017 .


Richy  
GROUP






## CONTACT US

 [www.mind.com.sa](http://www.mind.com.sa)

 [info@mind.com.sa](mailto:info@mind.com.sa)

 011 470 0338

 (+966) 50 006 9627

INTERIOR DESIGN

FURNISHING

SUPERVISION

IMPLEMENTATION

MIND